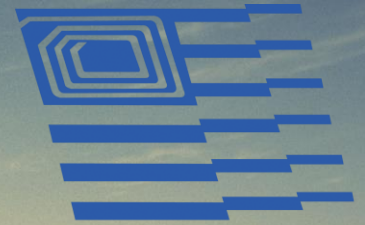


# land track solution



**AB&R**

identify. track. manage.



Satellite-based land tracking and fleet management solutions from Honeywell Global Tracking

Land Track from Honeywell Global Tracking operates in some of the harshest environments in the world. Featuring a satellite-based tracking terminal, emergency alerting and fleet management capabilities, Land Track allows fleet managers to monitor and protect their assets while analysing journeys and driver behaviour – improving efficiencies and reducing costs.

**Honeywell**





When your employees are working and travelling in the most remote and harsh environments, you need to know where your assets are, what they are doing and ensure that your drivers are safe. Land Track from Honeywell Global Tracking is a single-source solution for tracking and managing assets using InmarSAT M2M technology.

Coupled with the web-based ViewPoint application, Land Track allows stakeholders to:

- Receive panic alerts to multiple recipients in case of a driver emergency via the ViewPoint application, SMS and email
- Over The Air Control (OTAC) of a solenoid at the push of a button. This enables remotely switching lights on or off, starting a generator or even immobilising (and resetting) a vehicle (local laws permitting), preventing theft and loss of cargo
- Create geofences to warn or alert when vehicles enter hazardous areas or deviate from designated routes
- Set a safe speed threshold and monitor driver peak, average and over-speed events
- Analyse driver behaviour such as speeding and idling and use journey data to compile comprehensive trip reports

Even though the solution was designed primarily for land-based fleet management, it can equally be used for maritime applications.

### The Solution

Honeywell Global Tracking's Land Track solution comprises:

- A SAT-202 satellite terminal. Both permanent and temporary installations are available with the latter including magnetic feet, which makes it easy to move the terminal from one vehicle to another
- Driver panic alert button which triggers automated email and SMS messaging
- Extension cable and wiring harness including a vehicle ignition sensing cable
- OTAC solenoids (optional)
- Access to ViewPoint, our renowned web-based fleet management and asset tracking application



### Reports

The Land Track solution uses GPS positioning data to calculate accurate time and distance measurements and

together with the ignition sensor, determines journey start, stop and idling times. This information is displayed in ViewPoint and also used to automatically create and distribute fleet management reports. Within ViewPoint, you can create up to 10 recipients to automatically receive reports on a daily, weekly or monthly basis. The reports are also available on-demand, allowing you to access the data you need, when you need it.

### Available reports include:

- Geofence\* – This illustrates the amount of time each vehicle spends within a geofence. It also shows geofence infringements as well as time entered and time left, along with total ignition time. The report can be used to calculate the average journey times along a geofence route or to calculate how long a vehicle spends in a depot.
- Idle\* – This report highlights the amount of time a vehicle spends with the ignition on but not moving.
- Journey – The data in this report allows you to view what happened during each individual journey, for ex-

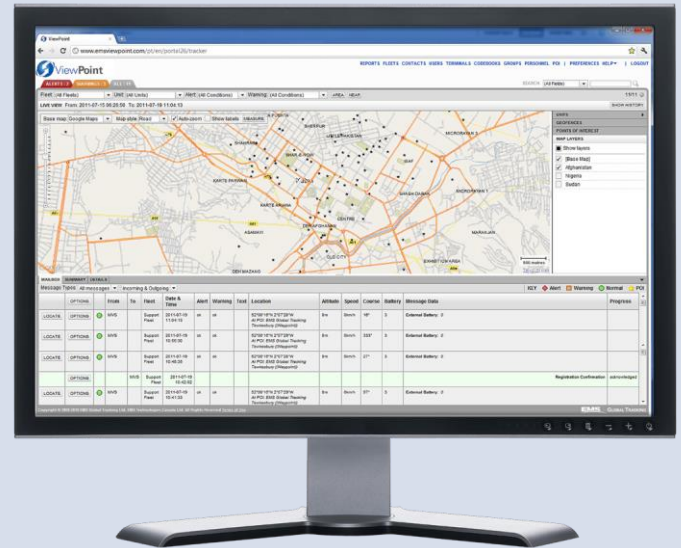


## Application: ViewPoint™

ViewPoint is an advanced asset monitoring application. It is web-based which means no installation is required and you are always using the latest version. ViewPoint incorporates security protocols to ensure your data is never compromised.

ViewPoint is designed specifically for the security industry and features automated alerts based on user-defined geofencing options, including area violations and route deviation. It is completely scalable and there is no fleet size limit, which means it can support your business no matter how large it grows.

Honeywell Global Tracking products are delivered with standard reporting rates, typically one hour, but you have the flexibility to change these rates over the air using ViewPoint. Depending on the product, the reporting rate may be as frequent as every two minutes or as infrequent as every 24 hours.



## Support

All our products include a 12 month warranty and access to our customer support team, giving you the assurance that should you need help or advice, you can obtain it, no matter where you are in the world.

ample, how fast the vehicle travelled, the amount of time the ignition was off, etc.

- Mileage\* – This enables you to monitor vehicle usage over a period of time.
- Speed\* – This report allows you to check a vehicle's speed against a pre-defined threshold. Speed bands can be created (for example, 30km - 45km per hour) to allow you to see the percentage of time a driver stays within the band. This is particularly useful for monitoring driver behaviour.
- Fuel\* – This displays the fuel purchases across a fleet over a period of time, using data entered by the Fleet Manager directly into the ViewPoint fuel log.
- Summary\* – This report provides information on vehicle use and driver behaviour over a specific period of time. Reporting values include distance traveled, the amount of time the ignition was switched on with the vehicle in motion and also with the vehicle idling, the total stop time etc.

\*Premium features

## CASE STUDY: Cargo Security

**Problem:** A security company wanted to protect trucks transporting heavy equipment during the construction of a pipeline in Papua New Guinea. The high value of the cargo led to a constant threat of theft and potential harm to the drivers. The isolation and mountainous terrain meant that GSM-based tracking devices were of no use there.

**Solution:** Honeywell Global Tracking offered the customer the Land Track package with custom mapping (which they provided). The solution proved ideal and the trucks are now monitored day and night without interruption. Theft relating to the transportation of goods has significantly dropped since the introduction of Land Track.



## CASE STUDY: Driver Security

**Problem:** A transport company in Nigeria faced threats of hijacking and the unauthorized use of their vehicles on a daily basis. Patchy and unreliable GPRS coverage meant that vehicles couldn't be tracked through some rural parts of the country. Also, should a vehicle cross the border, the vehicle couldn't be traced and roaming costs are excessive.

**Solution:** The company installed Land Track units and their vehicles are monitored both from a control room in Lagos and the UK. The knowledge that these devices are not limited by borders or GPRS signal acts as a deterrent and driver behaviour has dramatically improved, along with vehicle and driver security.



## About Honeywell Global Tracking

Honeywell Global Tracking is a Strategic Business Entity within Honeywell, a Fortune-100 group and market leader in the technology sector. HGT owns and operates its own access control and signalling equipment, network infrastructure as well as tracking and management applications, which are operated from a fully redundant, high security data center in the UK. Whether your business is large or small, Honeywell Global Tracking has the breadth of products and depth of personnel needed to make satellite tracking work for you.

# Honeywell

### For more information

[www.gt.honeywell.com](http://www.gt.honeywell.com)

### Honeywell Scanning & Mobility

Honeywell Global Tracking  
Miller Court, Severn Drive  
Tewkesbury, Gloucestershire  
GL20 8DN UK  
+44 (0)1684 278610  
[www.honeywell.com](http://www.honeywell.com)



**AB&R**  
identify. track. manage.

### AB&R (American Barcode and RFID)

[www.abr.com](http://www.abr.com)

*AB&R is a certified Honeywell Partner*