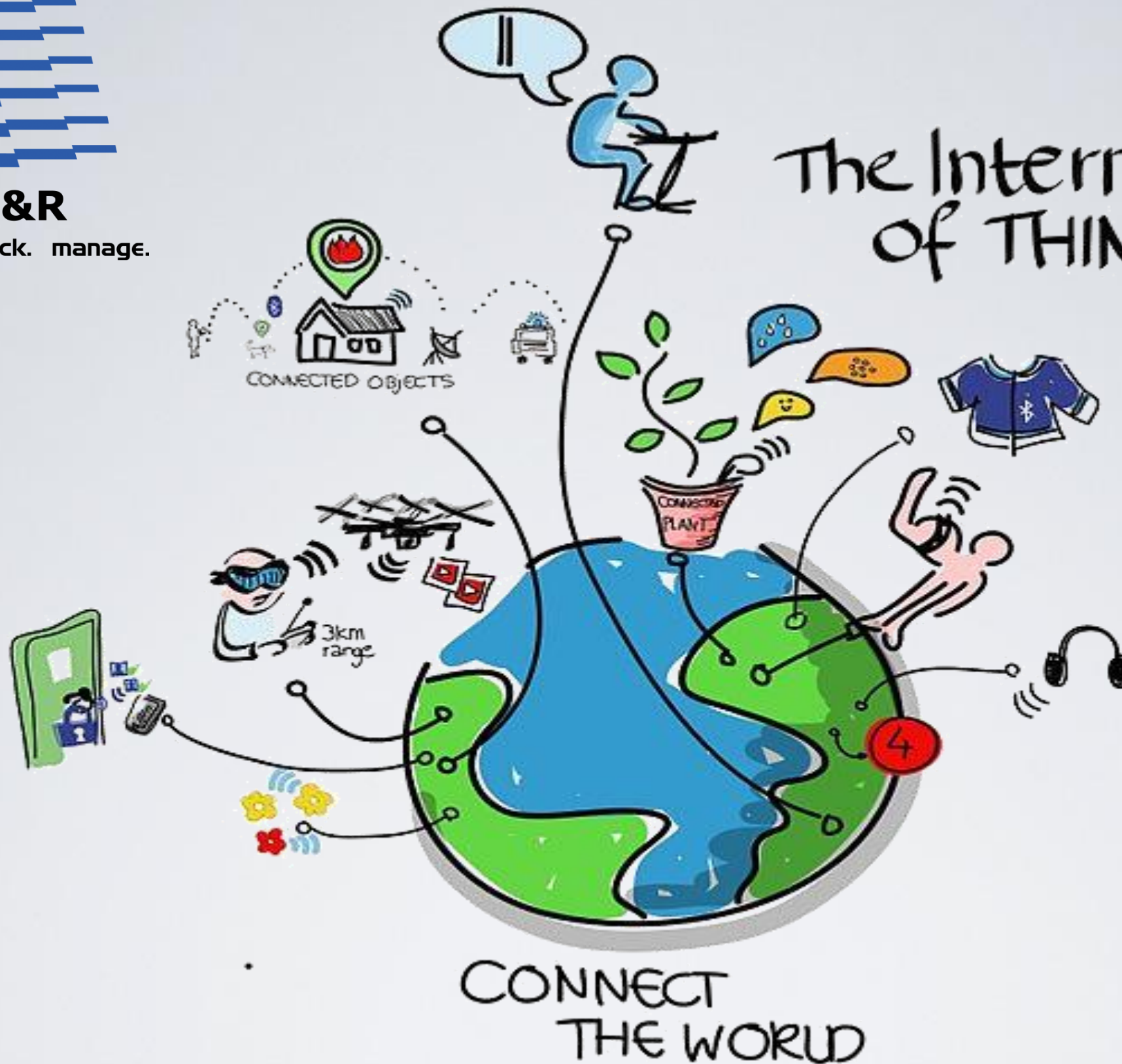


AB&R

identify. track. manage.



SEE MORE. DO MORE.



MOTOROLA SOLUTIONS



Wikipedia:

The **Internet of Things (IoT)** refers to uniquely identifiable objects and their virtual representations in an [Internet](#)-like structure

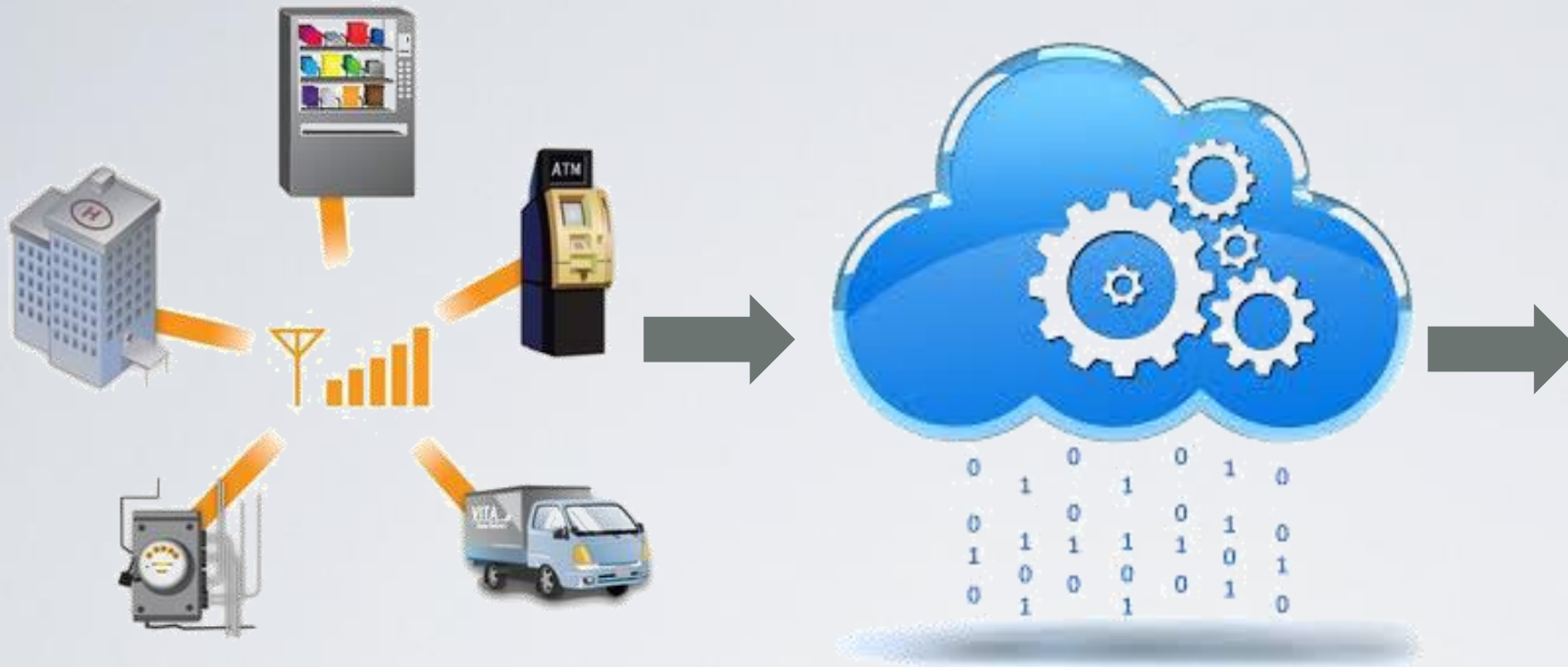


A few years back, Wharton named the internet as the most important innovation of the past 30 years. The internet revolutionized the way we humans exchange information

Today there is a new revolution taking shape:
The Internet of Things.

Just as the Internet allowed people to exchange information and learn new things, the next wave will allow devices to communicate with one another.

How does it work??



Lots of Information is collected from devices and that data is sent across a cellular or wireless network

Cloud based platforms and services are capturing all of the data being transmitted

Software interprets the data and makes it available to the end user to make informed decisions

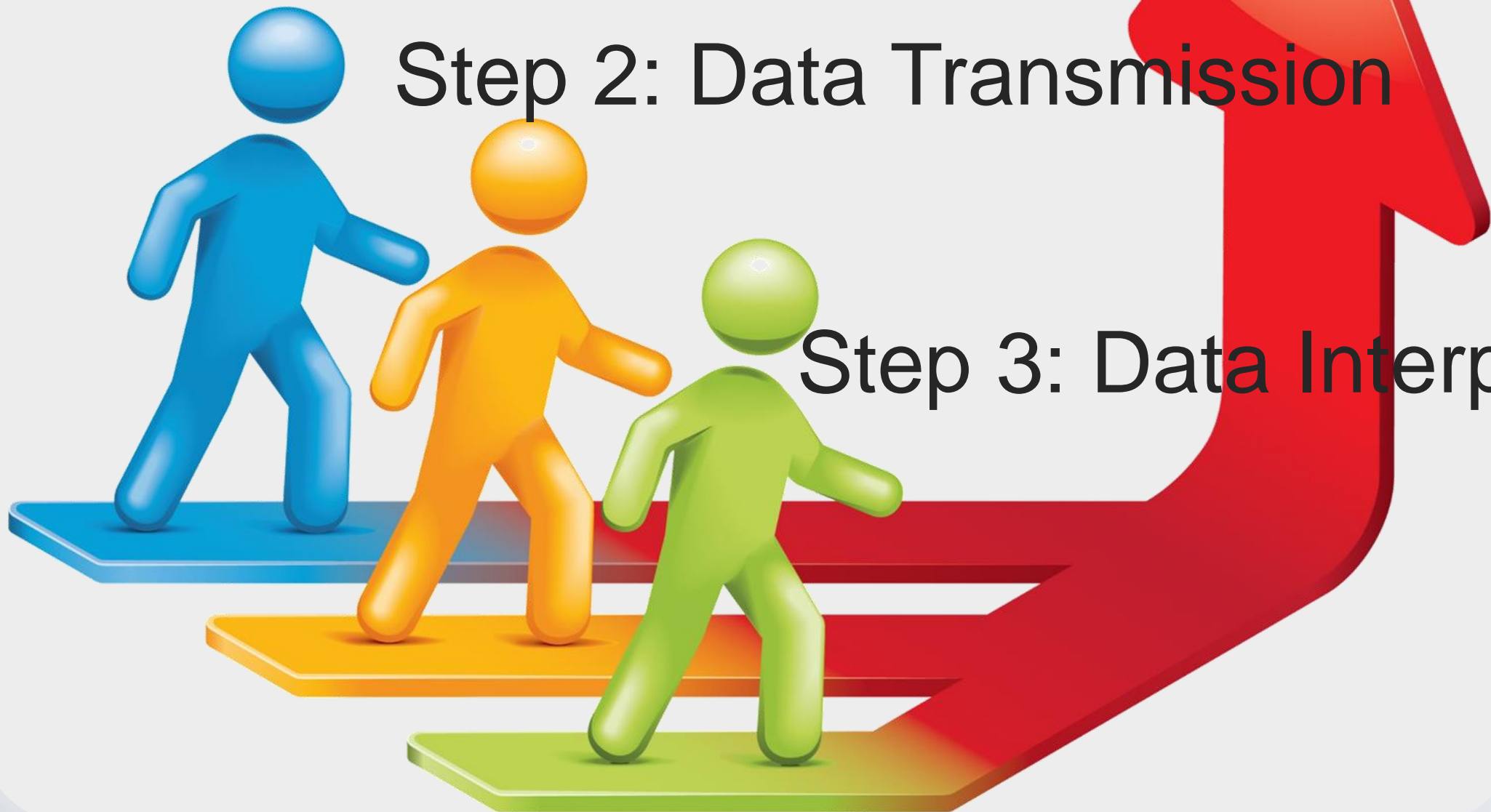


Steps to make it work

Step 1: Data Collection

Step 2: Data Transmission

Step 3: Data Interpretation



Data Collection:

Research estimates that nearly 2 billion M2M devices were connected globally in 2013...and the number will rise to 18 billion within a decade.

Consumer Devices



Healthcare



Retail



Utilities



1.99 billion other uses we have not thought of...

Data Transmission:

After the device sensors collect the data, it is transferred over wireless or cellular networks.

Challenges



Global IP traffic estimates will increase 29% per year through 2016



Telecom Networks are in need of an upgrade to support the new traffic



Wireless networks will need to be enhanced to support the increased new traffic



Strong, reliable, and faster networks will be expected

Data Interpretation:

Someone needs to make sense of all of this data...which is generally a harder task than collecting the data.

Data Interpretation

Application platforms and software providers needs to allow end users to interpret the data on their terms

The data needs to assist with making better business decisions from it

The platform needs to be easy to use

The offering needs to work all of the time

What is needed to make it a success

Data Management

Data
Intelligence/Analytics

IT Architecture

Security